

1/2019

Primary Health Care
<http://www.bristol.ac.uk/primaryhealthcare>



@capcteaching

Teaching Newsletter

Bristol Medical School, 1st Floor, 5 Tyndall Avenue, Bristol, BS8 1UD
Tel: 0117 42 82987 phc-teaching@bristol.ac.uk

All of us in CAPC Teaching are wishing you a very happy new year and an enjoyable time teaching



New Year's Resolutions?

Take more care of myself Give advice on exercise to my patients Attend the RCGP Severn Faculty Gala Dinner on 7th June and more on page 3

Congratulations to Trevor Thompson, CAPC Head of Teaching

who was appointed **Professor** in 2018

Don't miss Trevor's **inaugural lecture** in the Will's Memorial Building, Queens Rd, Bristol, on Friday 22nd March 6.15 pm. All welcome. To find out what Trevor will be talking about, please check out his intro on **page 2**

Professor Thompson has a keen interest in *nutrition and health*. He and his students were invited onto Jamie Oliver's Channel 4 programme '*Jamie and Jimmy's Friday Night Feast*'. If you missed it, you can catch it here

<https://www.channel4.com/programmes/jamie-and-jimmys-friday-night-feast>

MB21 Year 3 coming on stream in 2019-20

32 **Primary Care sessions** — 4 times the number in MB16. Are you ready for the challenge? Would you and your practice like to be part of this exciting change? **More on p. 3-5**

Research at the Centre for Academic Primary Care

You can read the latest news here

<http://www.bristol.ac.uk/primaryhealthcare/news/>

Prof. Chris Salisbury gave the 2018 James Mackenzie lecture

Chris is a professor in Primary Health Care in CAPC and one of his research interests is multimorbidity

If you missed his James Mackenzie lecture, you can watch it on YouTube here

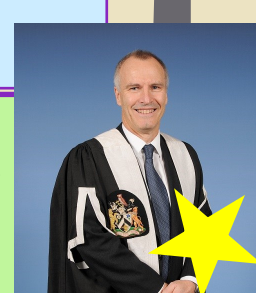
<https://www.youtube.com/watch?v=Y1dydRE-WUA&feature=youtu.be>

Or read the transcript here

https://research-information.bristol.ac.uk/files/177118635/James_Mackenzie_final_for_publication.pdf

Date for your diary!

North Bristol Academy GP Teacher Workshop, Southmead, 3rd April 7-9pm More info to follow



1/2019

Primary Health Care
<http://www.bristol.ac.uk/primaryhealthcare>



@capcteaching

Teaching Newsletter

Bristol Medical School, 1st Floor, 5 Tyndall Avenue, Bristol, BS8 1UD
Tel: 0117 42 82987
phc-teaching@bristol.ac.uk

Dear Colleagues

As is the tradition, I have been invited to deliver an inaugural lecture, to mark my appointment as professor. This is an informal occasion but also an important chance to share ideas and celebrate our communal achievement. If this grabs you do make a note of the date. If the talk requires an "Eventbrite" booking we will be sure to let you know.

For the thrust of the talk see below.

Good wishes

Trevor

Professor Thompson's inaugural lecture Fri 22nd March 6.15pm

Reception room in the Will's Memorial Building, Queen's Rd, Bristol

As is the tradition, I have been invited to deliver an inaugural lecture, to mark my appointment as professor. This is an informal occasion but also an important chance to share ideas and celebrate our communal achievement. If this grabs you do make a note of the date. The thrust of the talk is below/ attached,

Out of our heads! Learning medicine at the edge

The edge is a fascinating place. Between routine elements of practice and complete chaos there is a lively zone of uncertainty - which we can hardly avoid as both doctor and patient. Mind and body, science and art, person and planet, organic and functional, conventional and complementary. In this talk I share my toolkit for learning medicine at the edge. For instance, through "[compulsory creativity](#)" students have grappled with complexity through the Arts - outstanding examples deftly curated at www.outofourheads.net. For those seeking an academic approach, the university has offered, since 2006, an intercalated [BA degree in the Medical Humanities](#).

The substantive canon of "systems theory" has also served us well - offering a philosophical underpin for holism in practice. Come along if you're curious about how holons, chaotic pendulums, and murmurations of starlings, might fit in a medical curriculum.

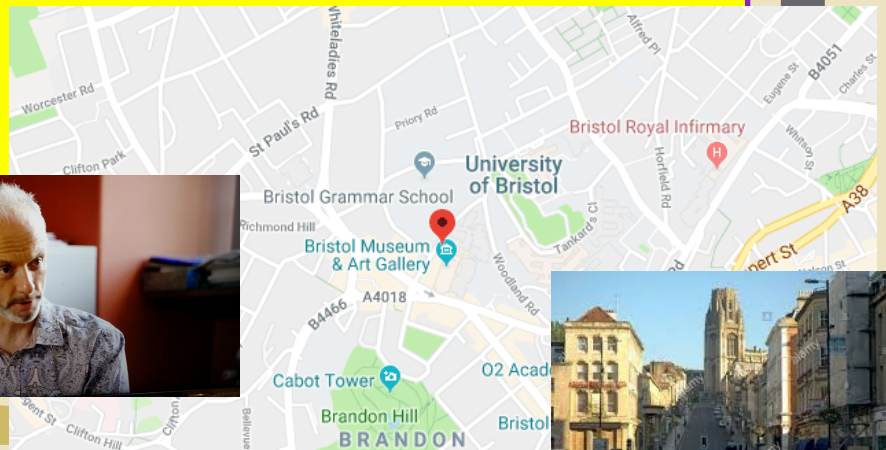
Most keenly though, we have striven to breach the biggest boundary of all - that between doctor and patient. Through our award-winning "Whole Person Care" course, grew up a community of practice that informs our current work on "Effective Consulting" - a radical new programme to stitch up the gaps between head, heart and hand. Embodied in [COGConnect](#), we seek to create doctors that are "compassionate, curious, critical, creative and collaborative".

The Primary Care community has long held a torch of holism in medicine. Early years students routinely expound the benefits meeting patients in their homes and doctors in their practices. As our new curriculum unfolds - I'll share some of our many aspirations for learning in and about General Practice.

This talk will be participative, illustrative and hopefully accessible to everyone who is interested in life at the edge.



Trevor and students being interviewed for **Jamie and Jimmy's Friday Feast** in the Royal Fort Gardens at Bristol Uni



alamy stock photo

1/2019

Primary Health Care
<http://www.bristol.ac.uk/primaryhealthcare>



New Year's Resolutions?

Take more care of myself Maybe try meditation? Check out 'headspace'
<https://www.headspace.com/>

Give more advice on exercise to my patients Check out 'moving medicine' <https://movingmedicine.ac.uk/prescribing-movement/how-to-use-this-resource/> Easy to use site with advice tailored to the time you have available, incl. advice for 1 min.

Attend the RCGP Severn Faculty Gala Dinner on 7th June Date for your diary. This year's speaker will be Dr. Marion Davis, a GP, who will talk about her work with Syrian refugees in Greece and refugees in Uganda. Why not make this a practice outing and encourage your colleagues to join you? Why not book a whole table? More details and venue information to follow.

Encourage my fifth years to apply for an elective bursary from the Severn Faculty

More information here <https://www.rcgp.org.uk/rcgp-near-you/faculties/south-west-england-region/severn-faculty.aspx> scroll to the bottom of the page

Applications to Jane Lohmann, Severn Faculty administrator by email to SevernFacultybursaries@rcgp.org.uk. The deadline for submission is midnight on 3 February 2019.

Log some CPD in my portfolio How about attending Prof. Thompson's inaugural lecture and watching Prof. Salisbury's James Mackenzie Lecture on YouTube and reflecting on their relevance and application to your own practice?

MB21 Year 3 coming on stream in 2019-20

We are very excited to be able to reveal more detail about year 3 MB21!

Starting in **September 2019**, year 3 medical students will get **32 sessions of general practice** - significantly more than the current 8. The style of teaching also represents a change from previous years. We have tried to build on the strengths of the current year 3 whilst introducing new elements such as consulting with 'undifferentiated' patients, a 'simulated surgery', and workshops which will include observed history taking and examination with patients, as well as elements such as a 'skill of the week'.

Here is a **Quick Reference Guide** that gives you more detail about MB21 year 3, including the teaching dates for year 3 in the 2019-20 academic year. As we continue to develop year 3 MB21 we will add further information to the year 3 MB21 page of the website

<https://www.bristol.ac.uk/primaryhealthcare/teaching/mb21-curriculum-review/year-3-mb21/>

We are planning to start recruiting practices in late Spring 2019

We're really excited about our new programme of teaching in the community, and owe a big debt of thanks to all the current year 3 GP teachers and students who have been involved in the development of this so far. As always, it's great to be part of such an enthusiastic community of teachers!

Simon Thornton and Ciaran Conway

Year 3 MB21 Co-leads

Year 3 General Practice Placement

Quick Reference Guide

For more information on each year, visit our website: <https://www.bristol.ac.uk/primaryhealthcare/teaching/>

GP3

.....

In year 3, students have 16 days in general practice on Tuesdays. This placement consists of two blocks, each of eight whole days in a practice. Each day in practice is themed, linking closely with student's learning in secondary care. At the end of each placement, students will take part in a 'simulated surgery' at the local academy, facilitated by the GP.

.....

How the placement works

Each day in practice is split into a workshop in the morning with 6 students, facilitated by the GP teacher. In the afternoon, two students take part in a teaching surgery and the other four students undertake their People, Populations and Practices (PPP) project.

Workshops

Each workshop is themed and has a detailed tutorial guide. As part of each workshop, we would expect you to bring at least one patient in relevant to that day's theme.

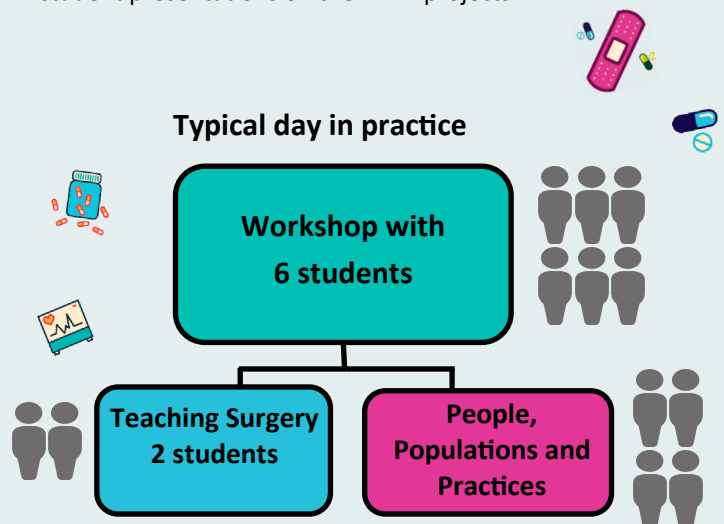


Suggested Summary Timetable	
08:30 -10:00	GP Preparation time
10:00 -13:00	Workshop
14:00 -17:00	Teaching surgery/PPP

Academy Day

On the final day of each block, students will take part in a simulated surgery at the academy. The GP tutors will help facilitate the session. After lunch there will be a series of brief student presentations on their PPP projects.

Typical day in practice



Year 3 Key Facts

- Tuesdays
- 16 days over the year
- 6 students per group
- £600-£650 per day



Teaching surgery

Two students will join you for the teaching surgery. These should be unselected patients and an opportunity for the students to practice their consultation skills. We would like each student to consult a minimum of two times during each surgery so suggest x4 30 minutes appointments.

.....

People, Practices and Populations (PPP)

The four students who aren't doing the teaching surgery will be doing PPP. We would like you to select a patient per pair of students for them to follow. They will visit at the start and end of the placement and in the time between will need access to two computers to review the patient records and access online teaching resources as pairs.



Payment and packages

For teaching one block, the payment is £600 per day (£4,800 for the 8 day block). If your practice signs up to our Year 3 Teaching Package to deliver all 16 days (both Block A and B), the payment is £650 per day (£10,400 per placement). Different GPs can supervise Blocks A and B. For more information on packages, please see the CAPC Teaching website.



Teaching Dates and Topics 2019-20

Block A		
Week	Date	Topic
1	17-Sep-19	Cardiovascular
2	1-Oct-19	Gastrointestinal 1
3	15-Oct-19	Neurology
4	29-Oct-19	Renal
5	12-Nov-19	Musculoskeletal 1
6	26-Nov-19	Ophthalmology and ENT
7	10-Dec-19	Emergencies in General Practice
8	7-Jan-20	Academy Day

Block B		
Week	Date	Topic
9	28-Jan-20	Respiratory
10	11-Feb-20	Gastrointestinal 2
11	25-Feb-20	Urology
12	10-Mar-20	Musculoskeletal 2
13	24-Mar-20	Dermatology
14	21-Apr-20	Gynaecology and Breast
15	5-May-20	Endocrine
16	19-May-20	Academy Day



'Brother and Sister' by Sarah Wake, Year 1 Medical Student

Teacher Development
Year 3 Workshop TBC

Key
Practice based day
Academy Day

Year 3 Frequently asked questions	
Can more than one GP deliver the teaching?	Yes, although we would prefer no more than two regular teachers per block.
Can I change the timings of the day?	You can arrange this with the students. They must still receive a three hour workshop and further three hours of teaching surgery and check-in/out.
If I have a GP trainee, can they help?	Yes, we are inviting GP trainees to help facilitate the simulated surgery. They could also facilitate the morning workshops for one block.
Will material for the workshop be provided?	Yes, we will provide detailed material for running the workshop. Think of it as following a recipe, but feel free to innovate if you have your own ideas!

